

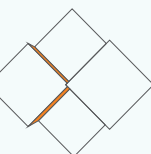
Specifications

Product	C15-31 Plus	C31 Plus
Pixel Pitch (mm)	15.625(V) 31.25(H)	31.25
Brightness (nit)	8000	8000
Refresh Rate (HZ)	≥10000	≥10000
Grayscale (bit)	16	16
Permeability	67%	67%
Power consumption (max./avg.)	230/77	250/84
Viewing angle (H/V)	160/45	160/45
Panel dimensions (W*H*D)	500*1500*97	500*1500*97
Panel Weight (kg)	9.6	9.2
Panel material	Aluminum	Aluminum
Ingress protection (front/rear)	IP65/IP65	IP65/IP65
Maintenance	Front and Rear	Front and Rear
Installation	Wall mounting	Wall mounting
Operation Temperature (°C)	-40~+50	-40~+50
Certification	CCC / CE CLASS B	CCC / CE CLASS B

Bright and Brilliant
Incredible Visual Performance

C15-31Plus / C31Plus

Next Generation Mesh LED Display for Outdoor Applications



Absen Optoelectronic Co.,Ltd
18-20F Building 3A, Cloud Park, Bantian Huawei Base,
Longgang District Shenzhen, 518129, P.R.China
T: +86-755-89747399 E: absen@absen.com
F: +86-755-89747599 W: www.absen.com

Absen Inc.
7120 Lake Ellenor Drive, Orlando,
Florida 32809, USA
T: +1-407-203-8870 E: info@usabsen.com
F: +1-407-203-8873 W: www.usabsen.com

Absen GmbH
Eisenstraße 5, 65428 Rüsselsheim a.M.,
Germany
T: +49 (0) 6142 78935-0 E: europe@absen.com
F: +49 (0) 6142 78935-29 W: www.absen-europe.com

C15-31Plus/ C31Plus

Next Generation Mesh LED Display for Outdoor Applications

Integrated with rich R&D experience and innovative design, the C15-31PLUS& C31PLUS series is light-weighted and transparent mesh LED display with excellent visual performance. Its solid quality makes it a perfect choice for DOOH applications, maximizing the value of commercial advertising.



15.625mm/
31.25mm



500*1500*97mm
(可选1000*1500*97mm)

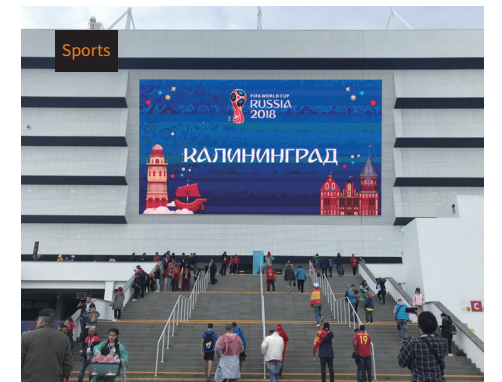


12KG/m²



Aluminum

Ingenious design makes it a perfect match for building façades



Colorful display performance, extraordinary visual experience.
For Billboard, street furniture, spectacular, stadium and other applications.



Light and ventilative

The panel weights only 12KG/m², 60%-80% lighter than the traditional product. The cabinet can be spliced without complicated heavy steel structure and can save raw materials costs, making quick and convenient installation.

With 67% penetration rate, the cabinet is of super strong wind resistance and also makes full use of air convection for efficient heat dissipation while taking into account of the indoor lighting. (C15-31PLUS&C31PLUS series can be installed and used directly on the windows of the building).

Excellent visual performance

Excellent performance in strong direct sunlight with 8000nits High Brightness Dynamic image with 10000hz high refresh rate.

More delicate color performance with 16bit high grayscale.



High Brightness



High Refresh Rate

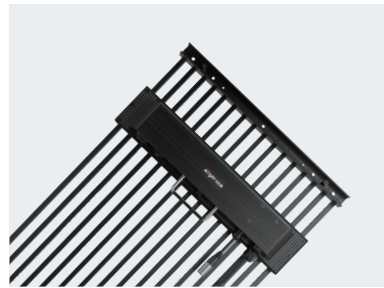


High Grayscale

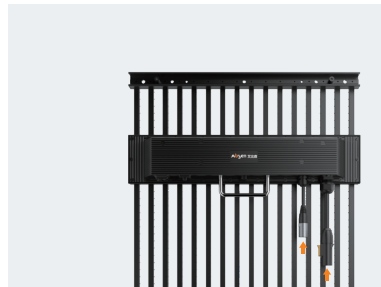
New highly integrated structure for reliable and durable use

Sturdy and reliable aluminum profile cabinet frame; Simple installation frame for the 2-in-1 cabinet splicing to meet customers' diverse needs.

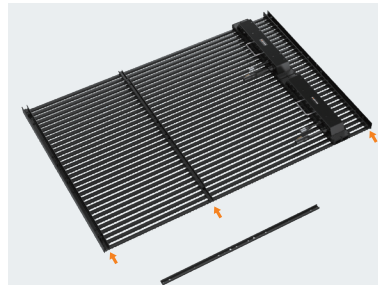
Perfect combination of the aluminum alloy power box, waterproofing sealant lights bar, high quality silicone cables and military aviation plug for IP65/IP65 high protection level.



Aluminum profile cabinet frame



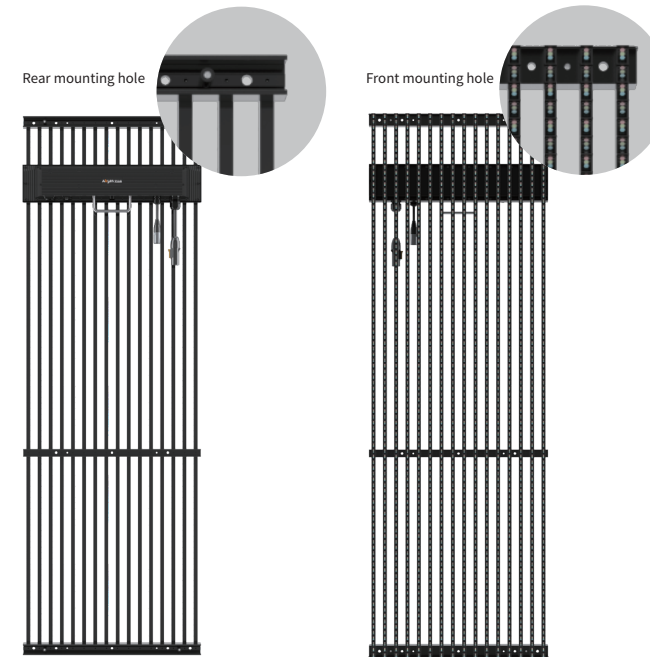
Aluminum alloy power box & military aviation plug



Simple mounting frame

(Applicable to 1000x1500x97mm cabinet)

Powerful performance and great savings on operating cost



77W / m²



- 40°C / +50°C



CE CLASS B
Certification

Suitable for all-weather environment (-40°C to +50°C)

The average power consumption is 77W/m²- remarkable energy saving effect
Support front and rear installation, convenient maintenance.